

ESTUDIO DE IMPACTO AMBIENTAL APROVECHAMIENTOS HIDROELÉCTRICOS DEL RÍO SANTA CRUZ (PRESIDENTE DR. NÉSTOR C. KIRCHNER Y GOBERNADOR JORGE CEPERNIC), PROVINCIA DE SANTA CRUZ

CAPÍTULO 4 – LINEA DE BASE AMBIENTAL

PUNTO 16 – RECURSOS ARQUEOLÓGICOS

ANEXO II – ZONAS MUESTREADAS

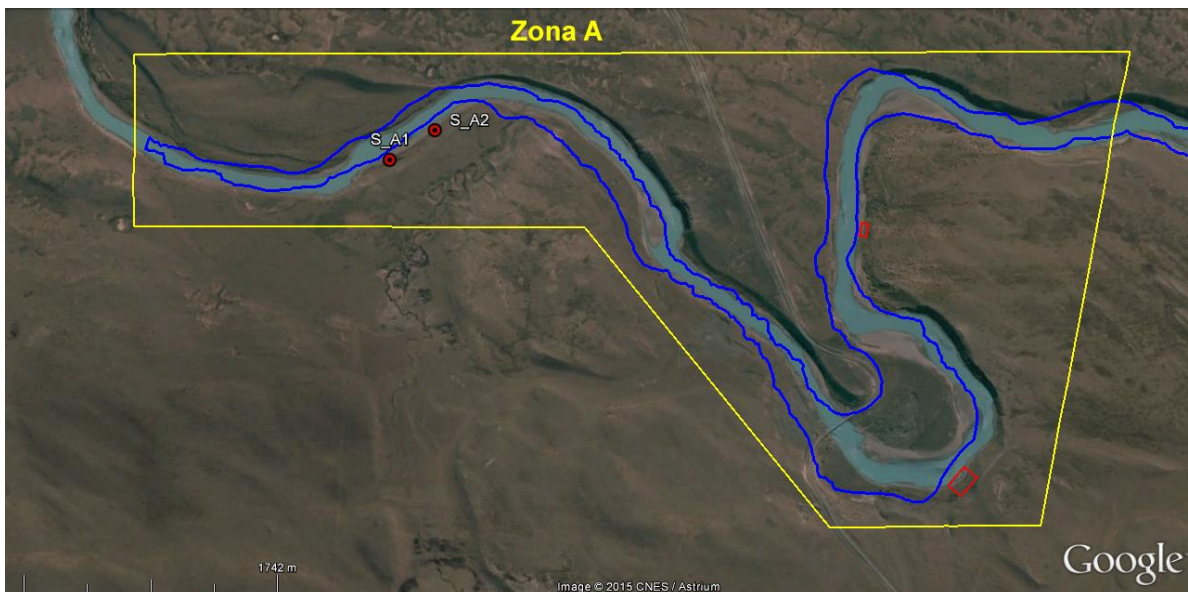
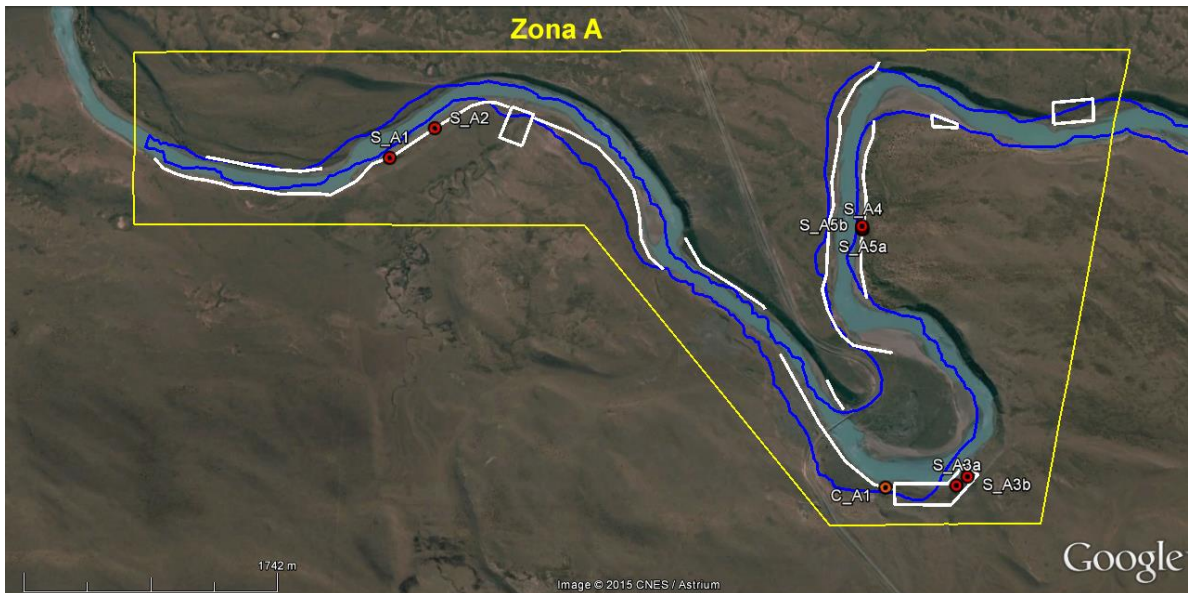
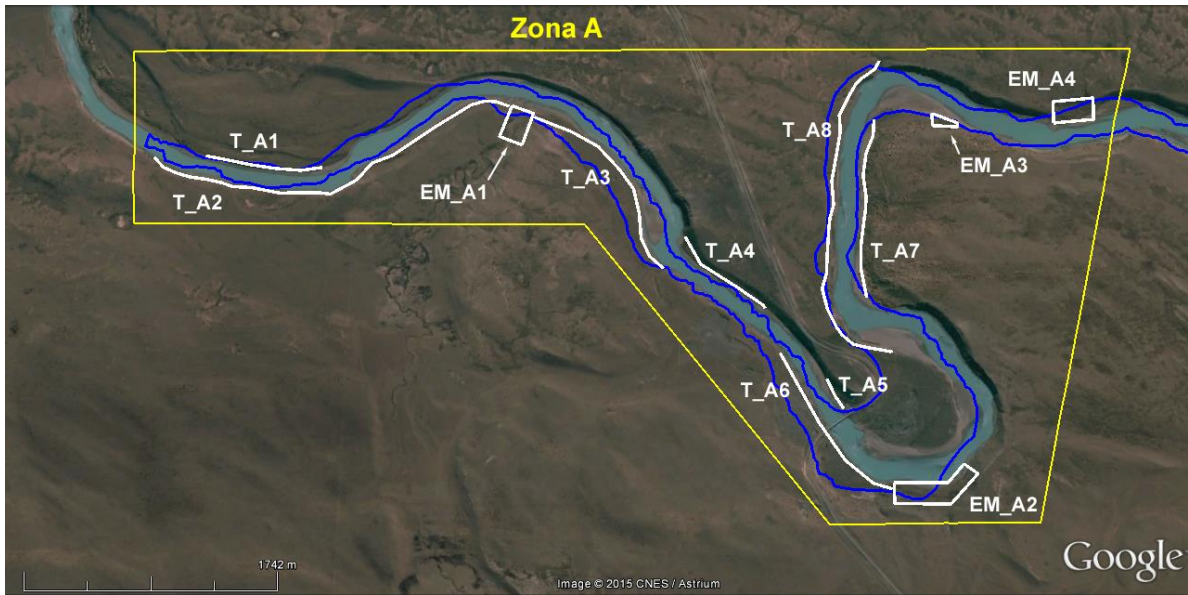
INDICE

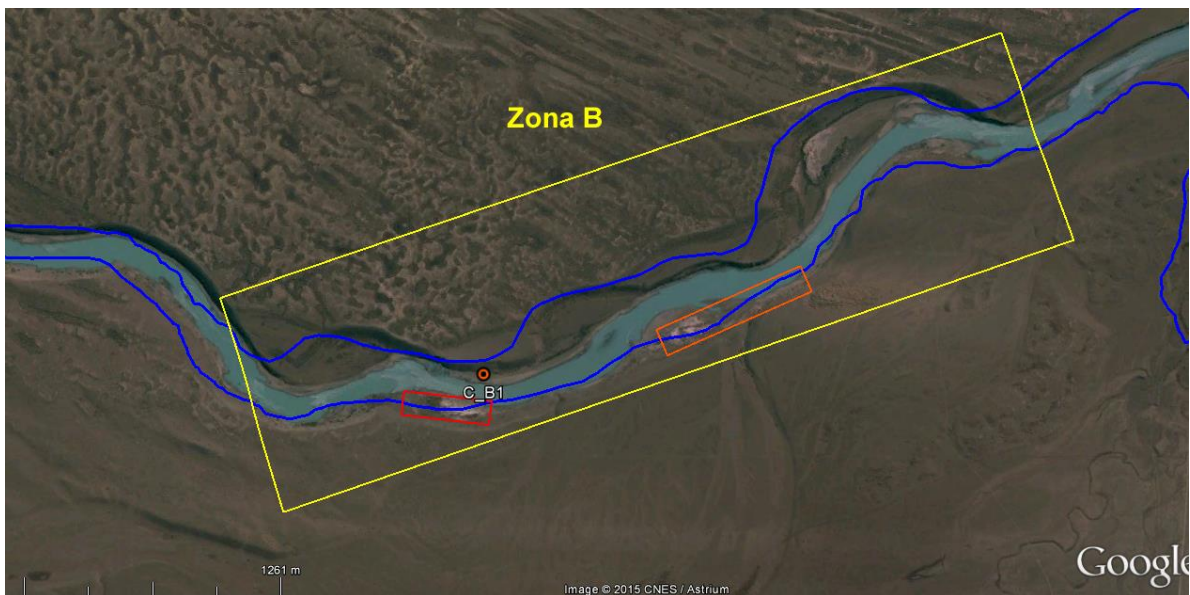
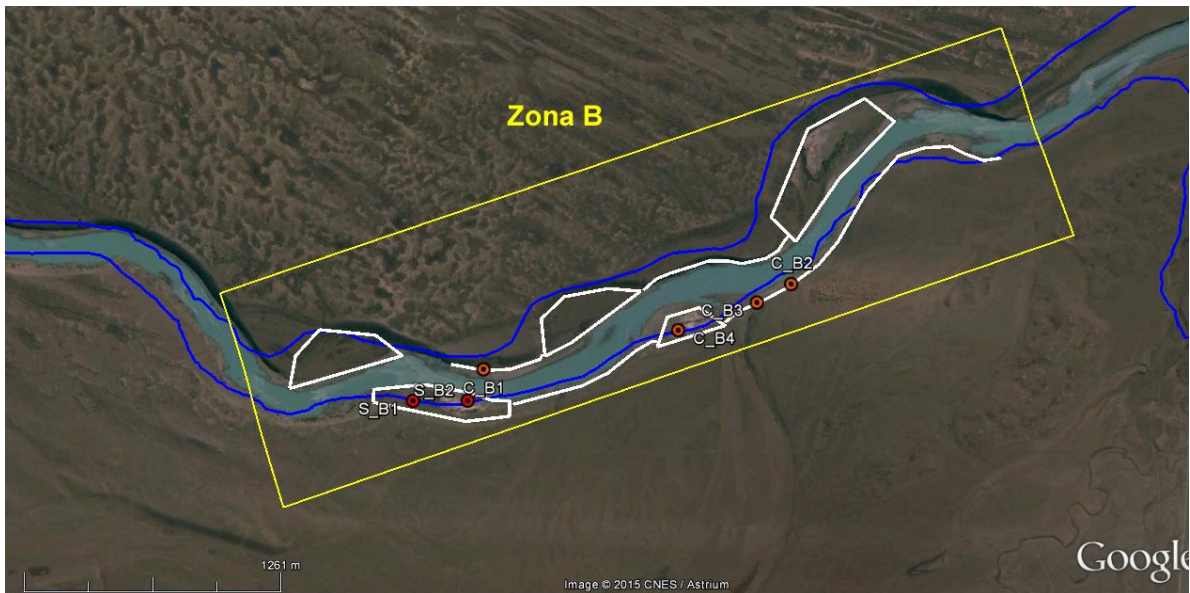
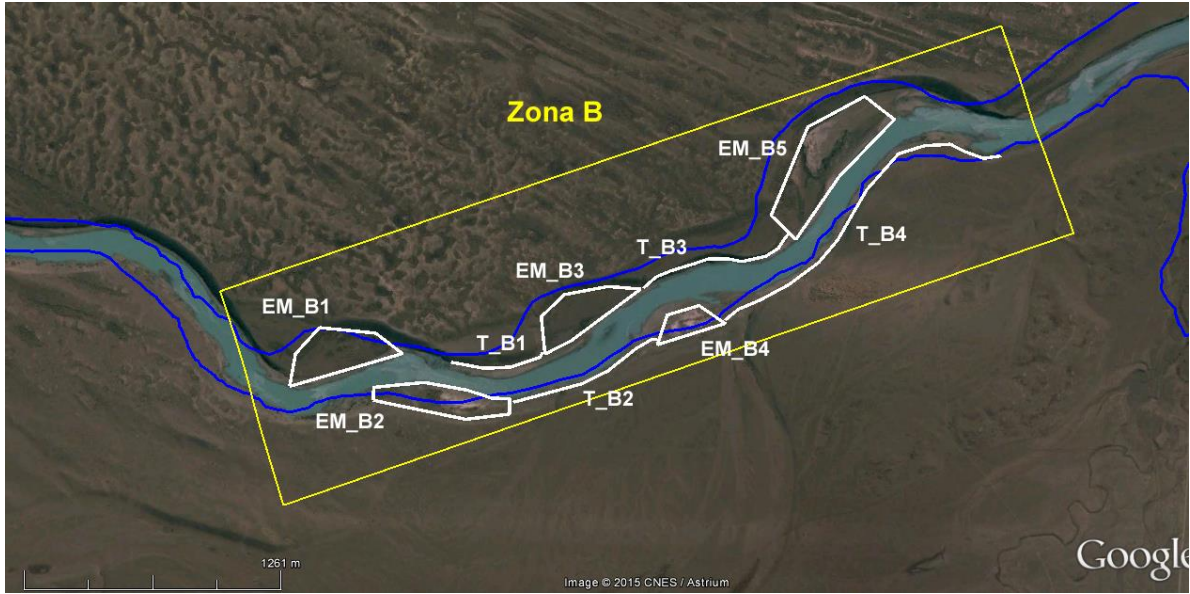
1	PRESA NESTOR KIRCHNER	2
2	PRESA JORGE CEPERNIC	17

1 PRESA NESTOR KIRCHNER

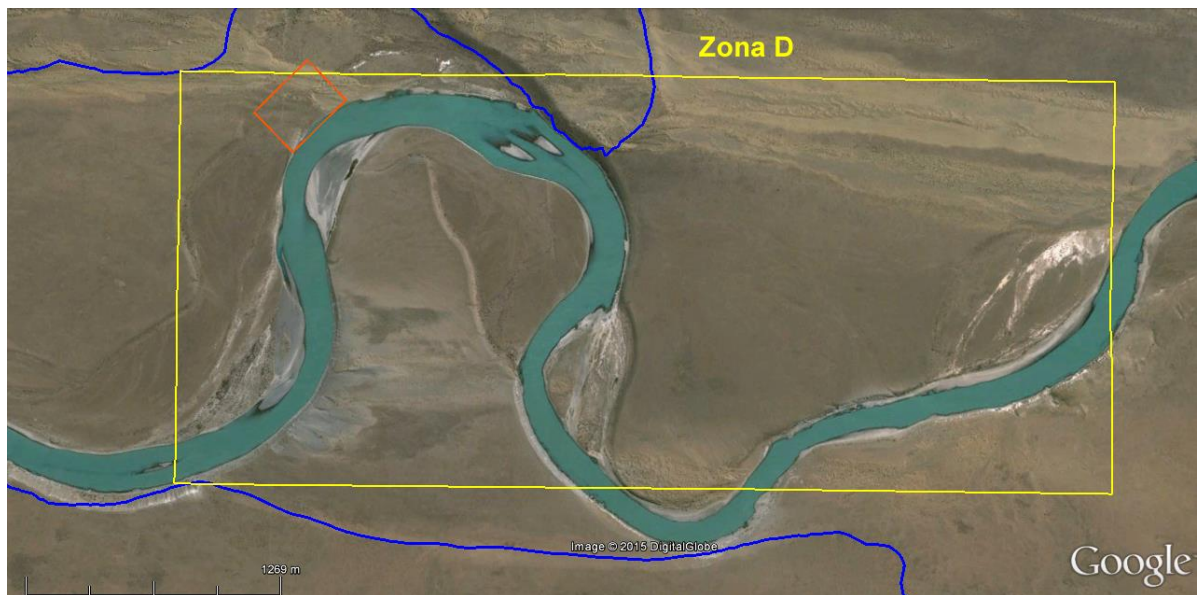
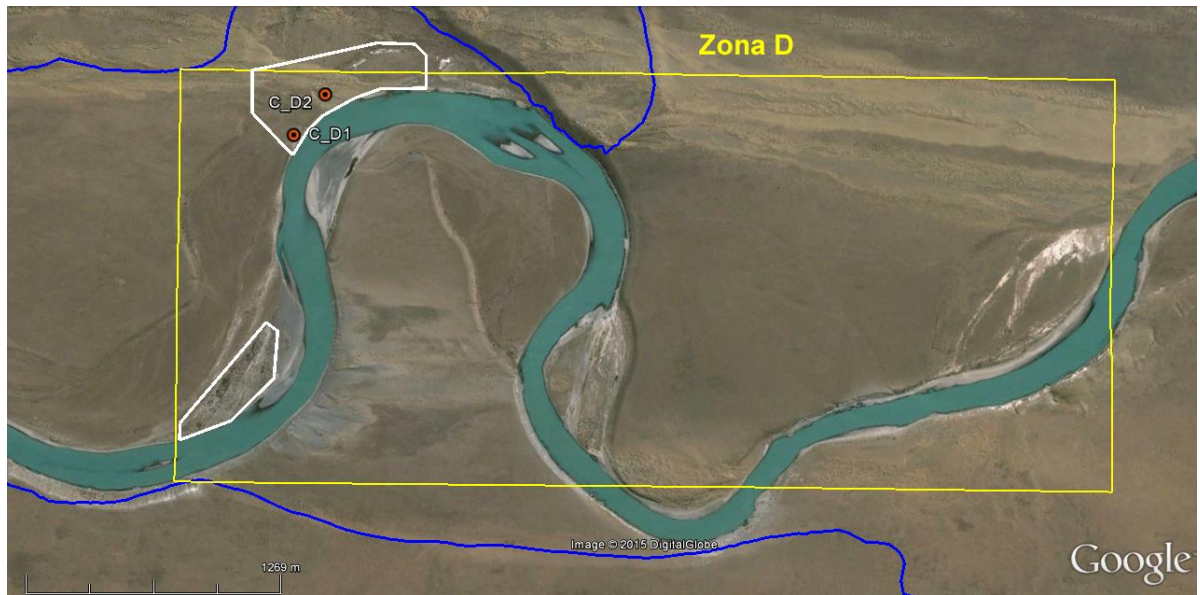
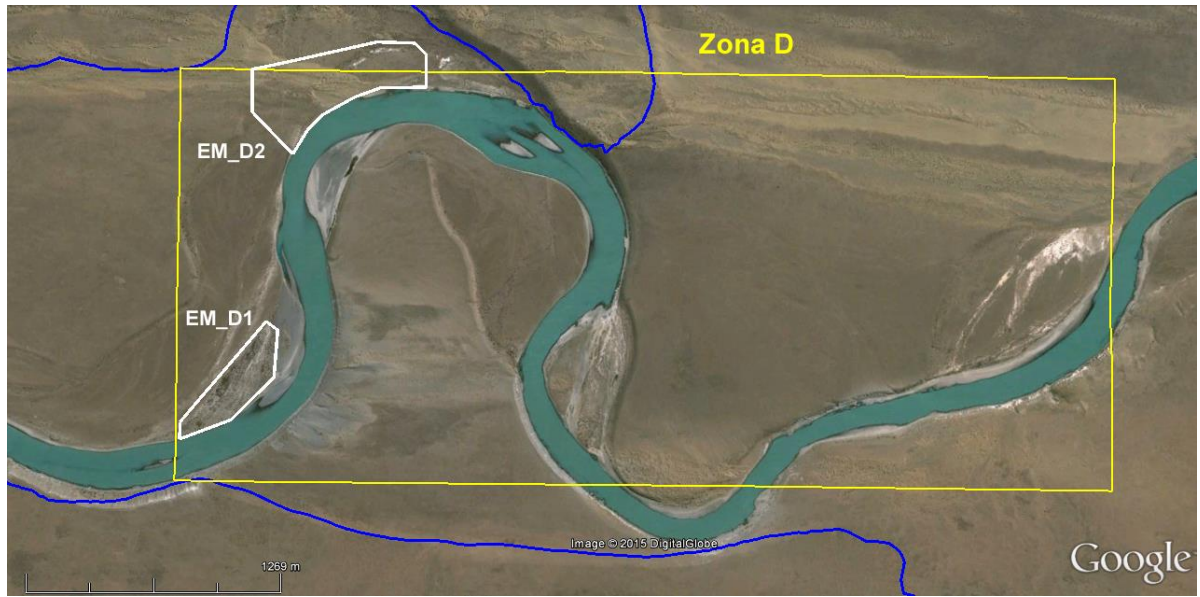


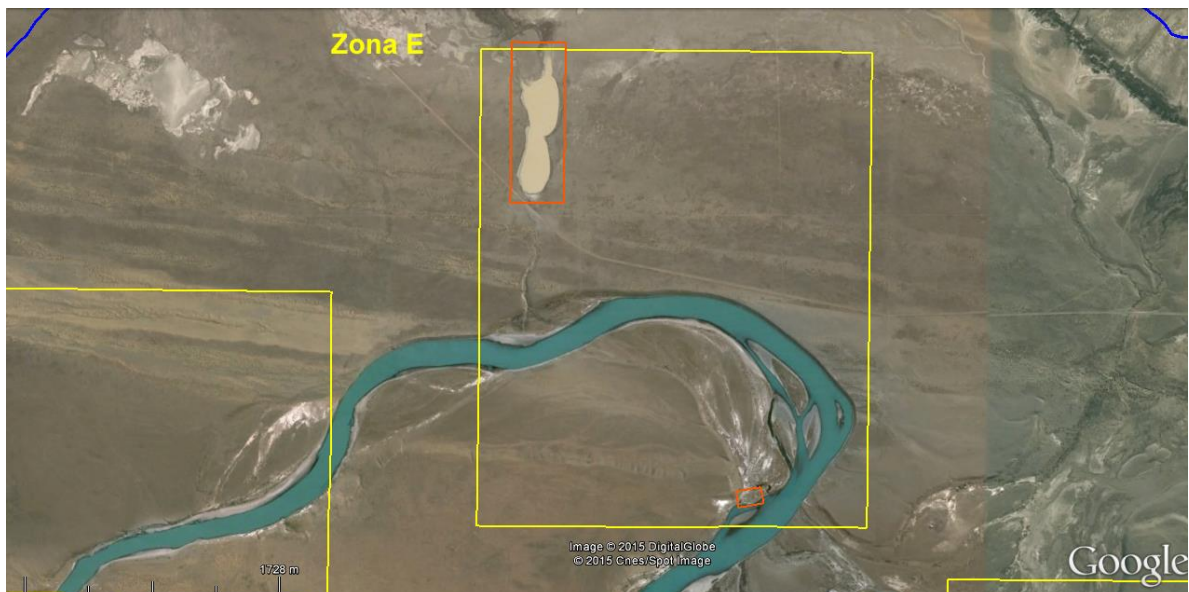
Figura 1. Área de inundación y zonas muestreadas para NK. A continuación se detallan los muestreos realizados para cada zona. Posteriormente, se indican los puntos o sectores en que se registraron materiales arqueológicos en cada uno de los muestreos, divididos en sitios y concentraciones. Finalmente, se presentan mapas con los espacios de alta y media sensibilidad en cada una de las zonas. La sensibilidad alta se indica en rojo, mientras que la media está expresada en naranja.

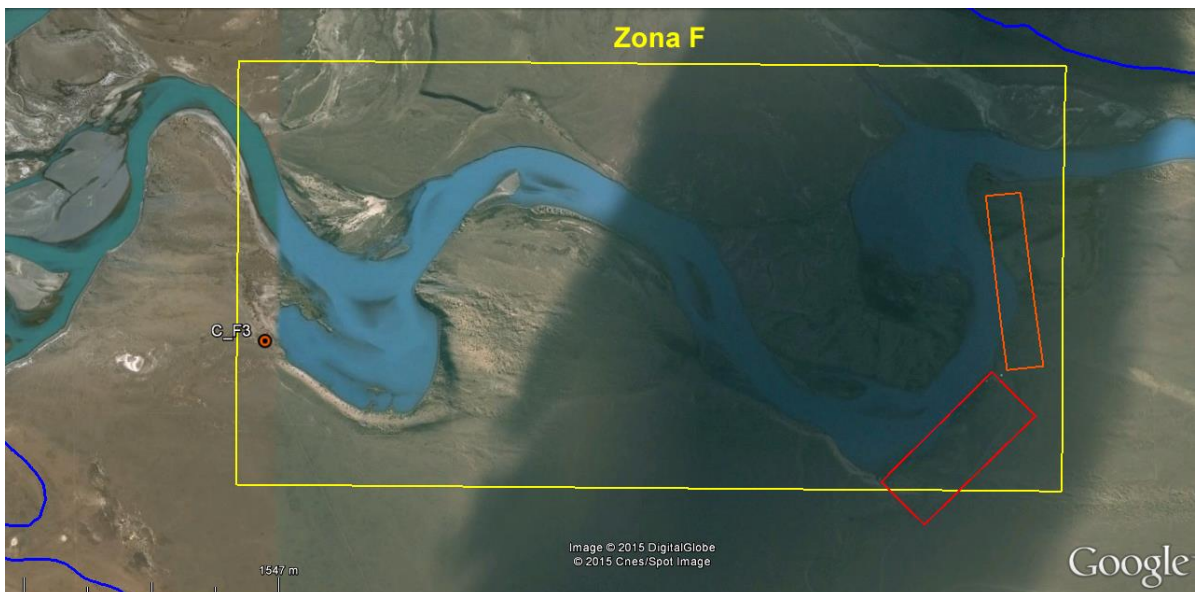
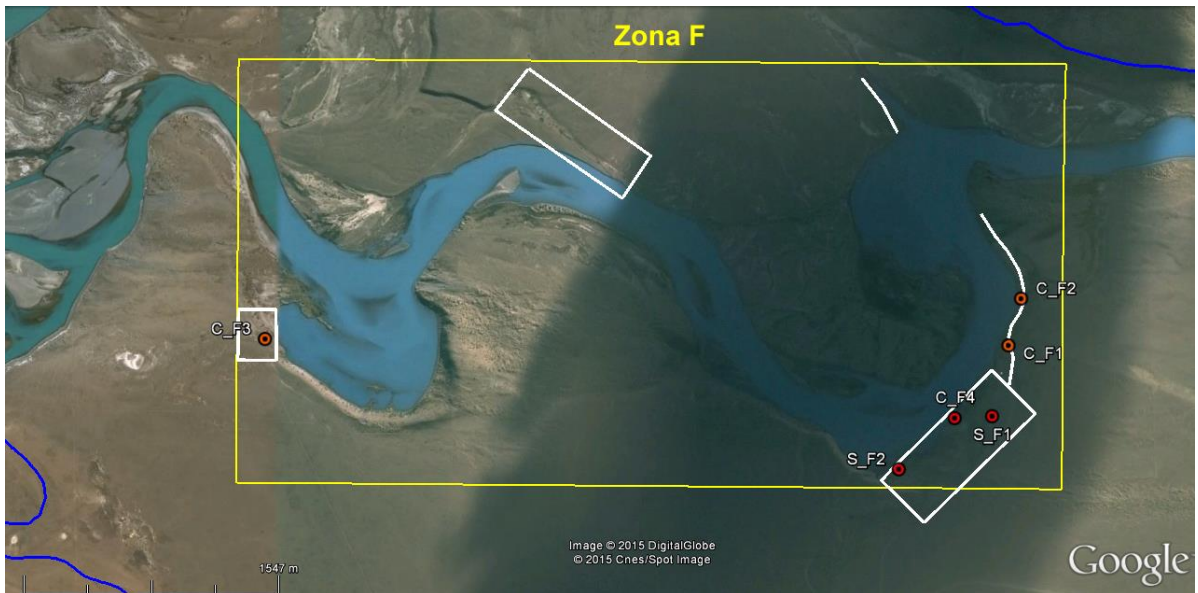
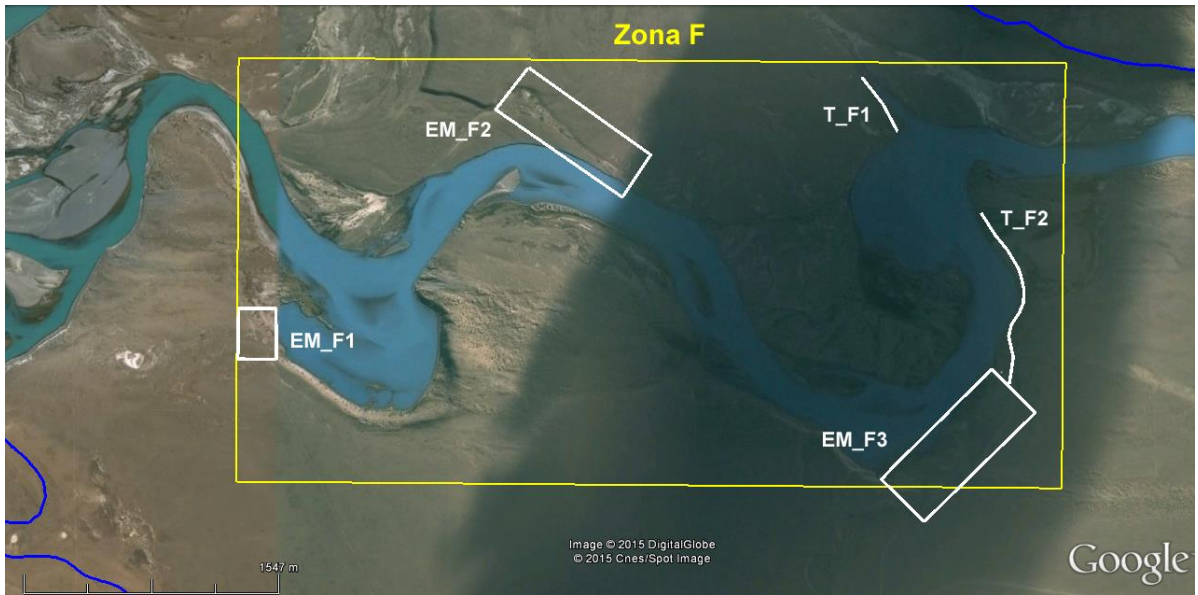


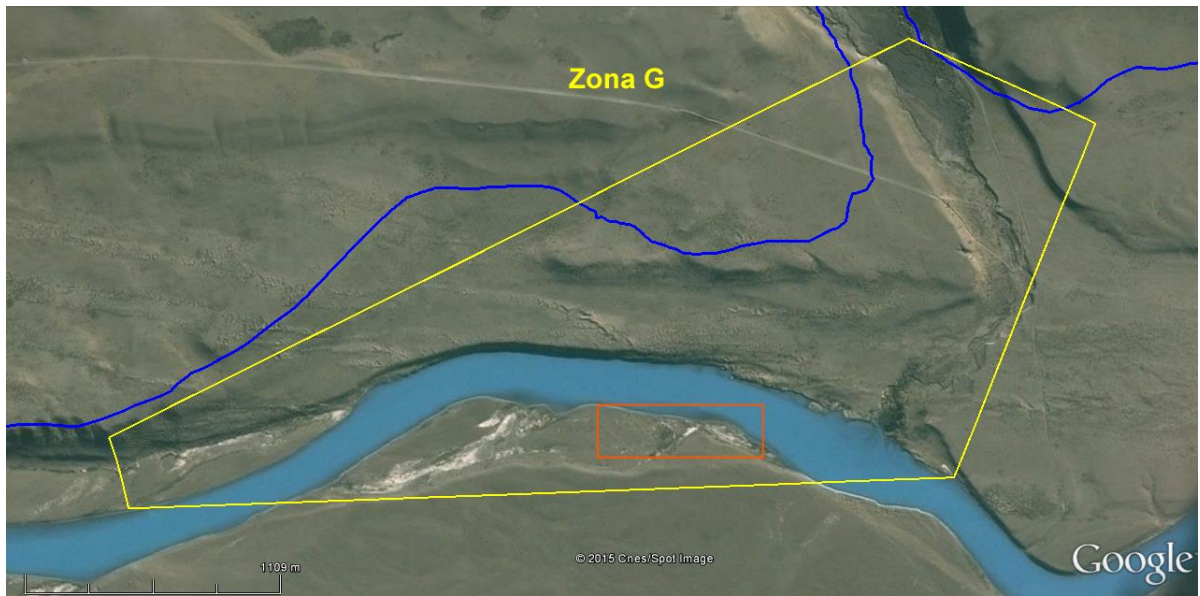
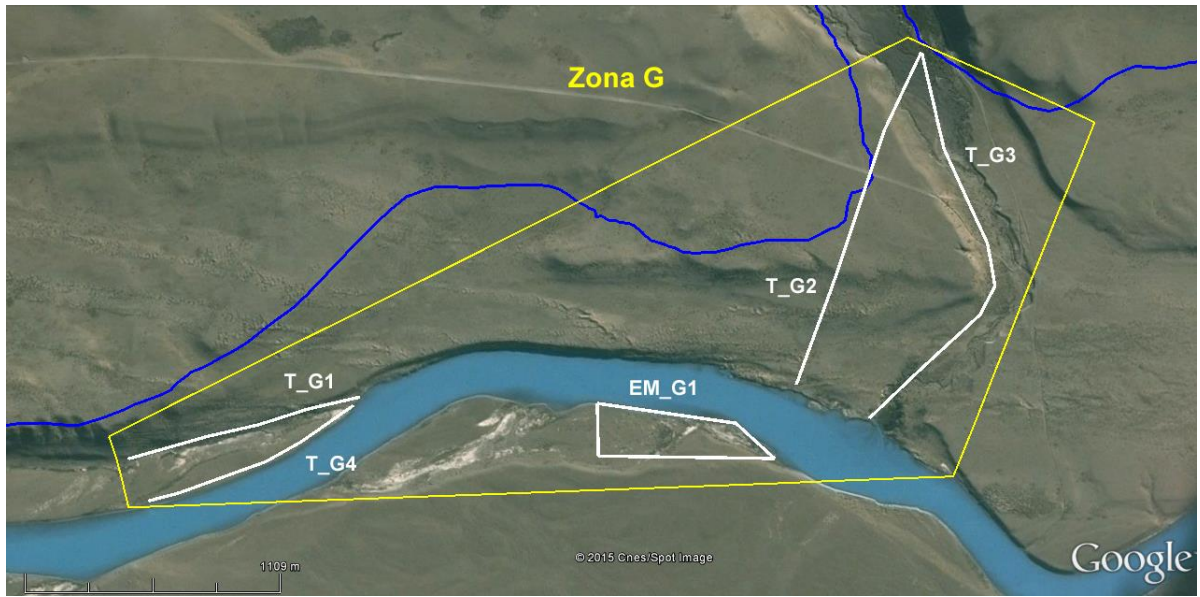


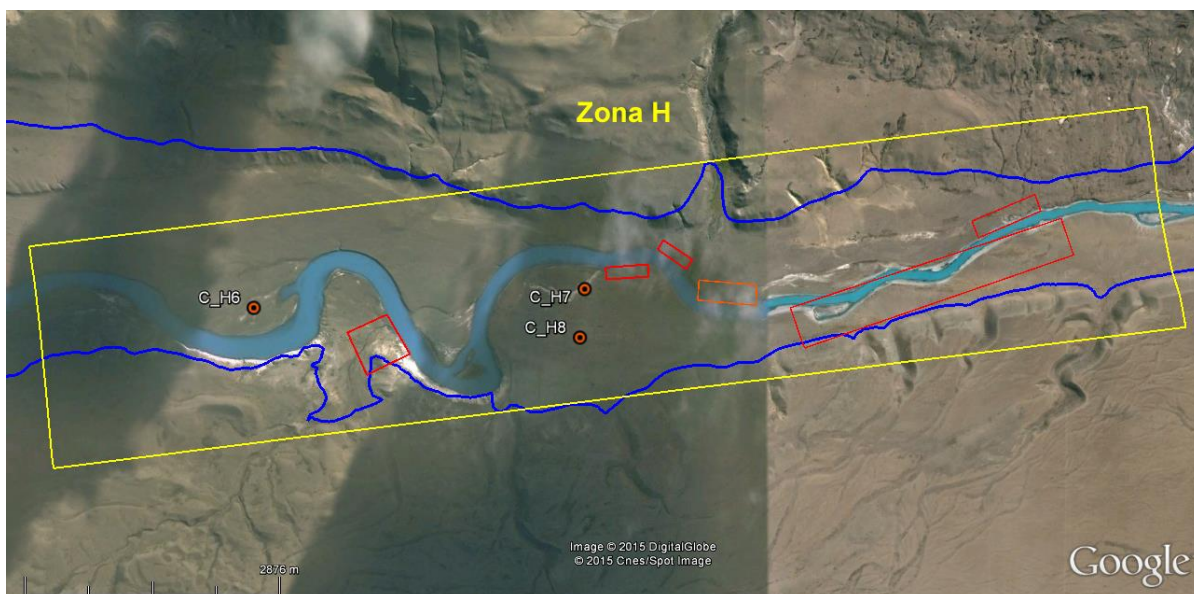
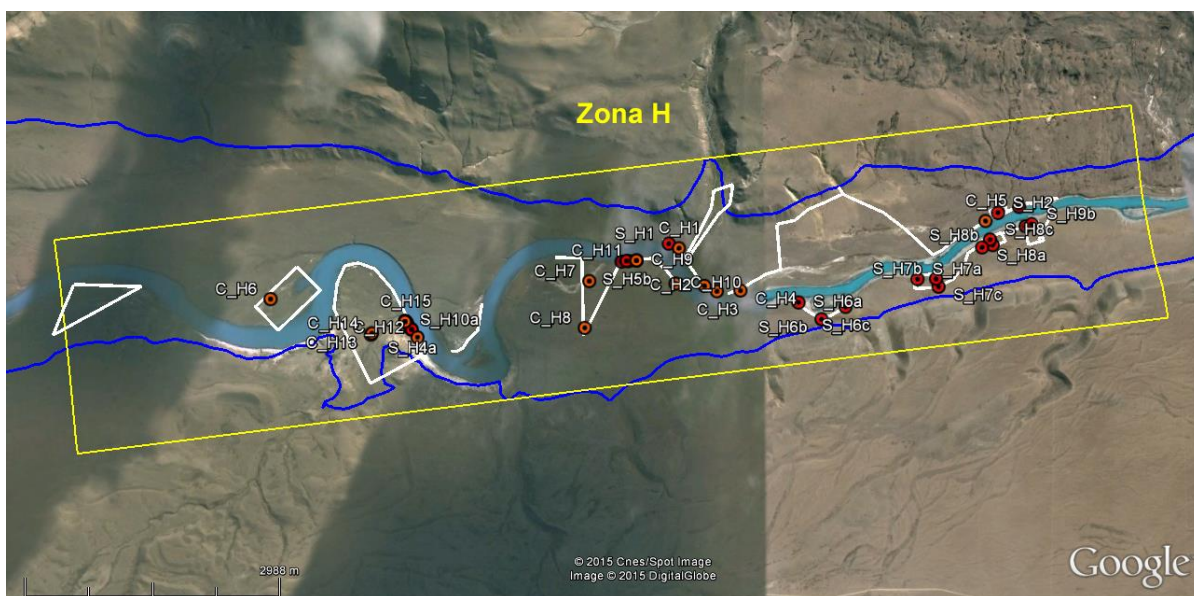
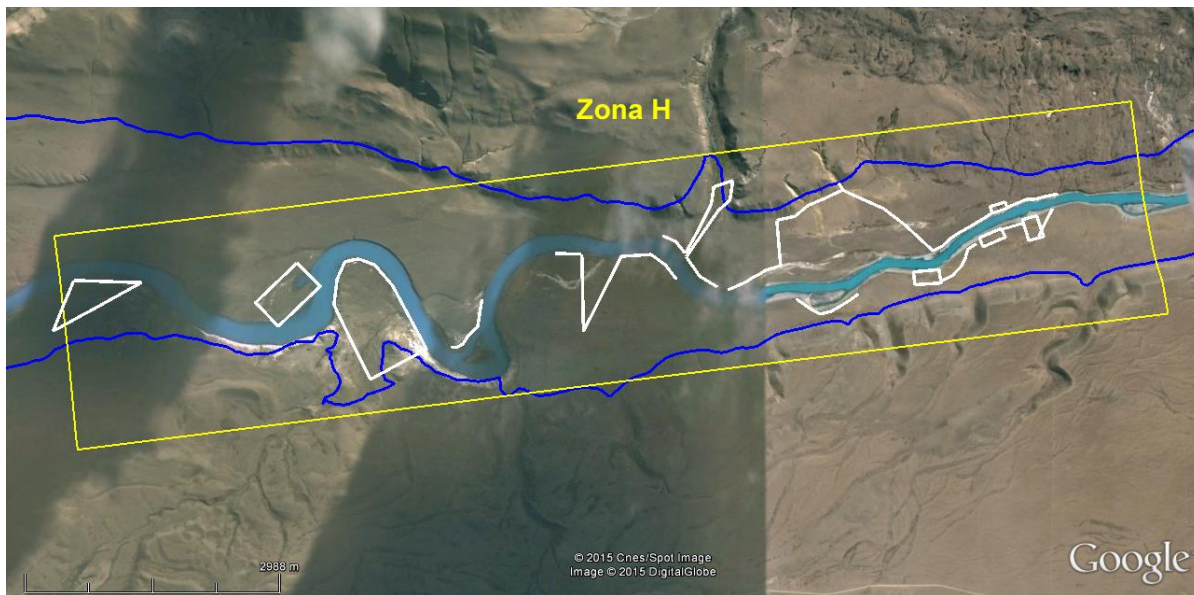


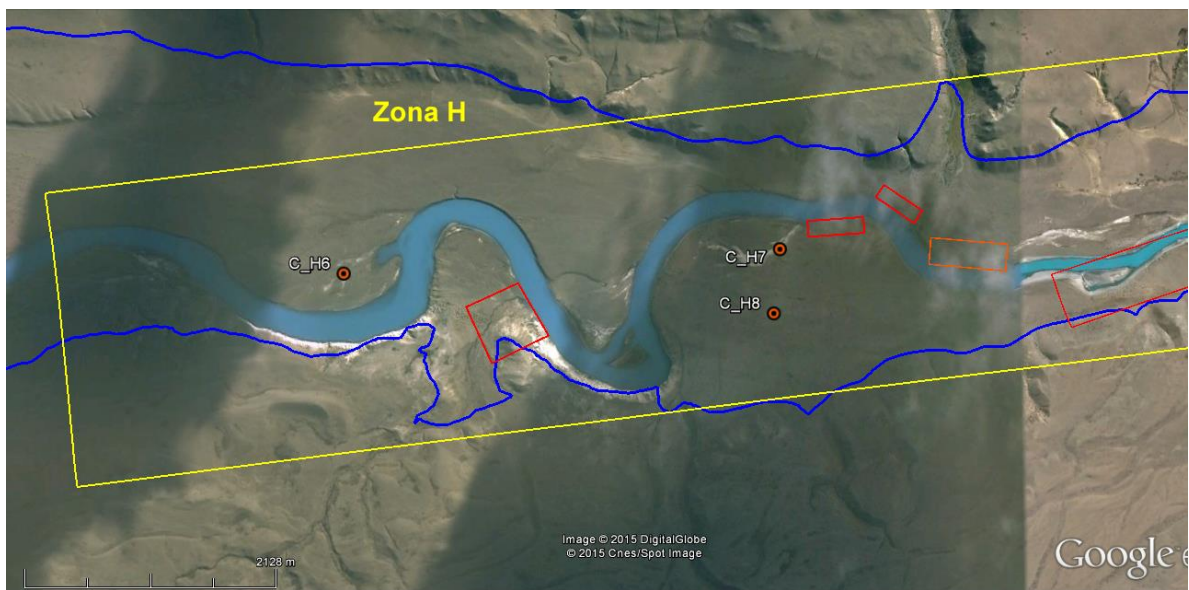
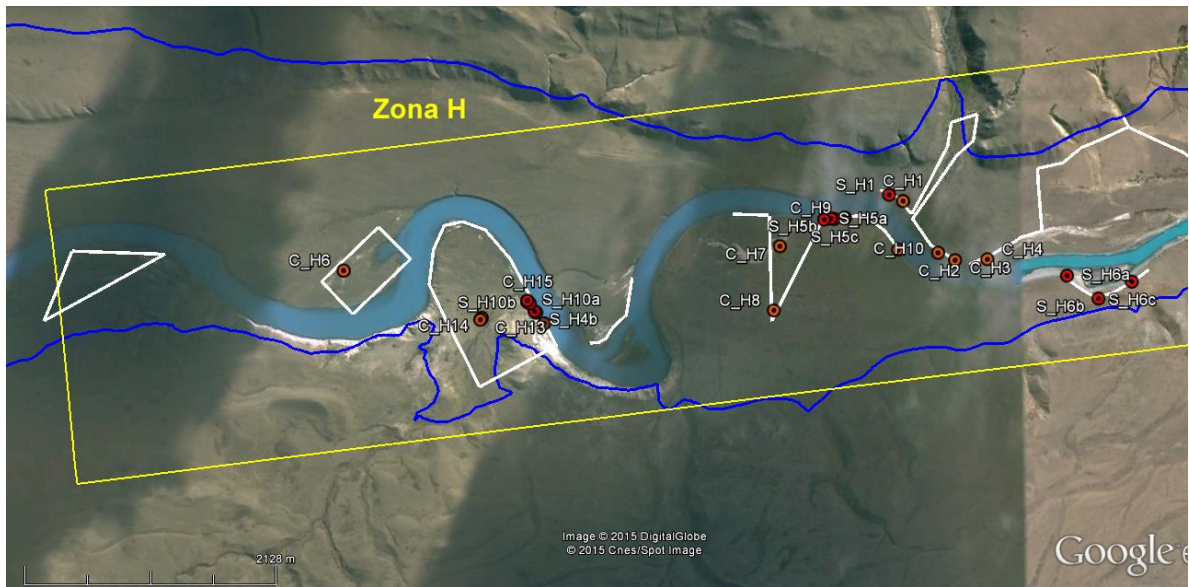
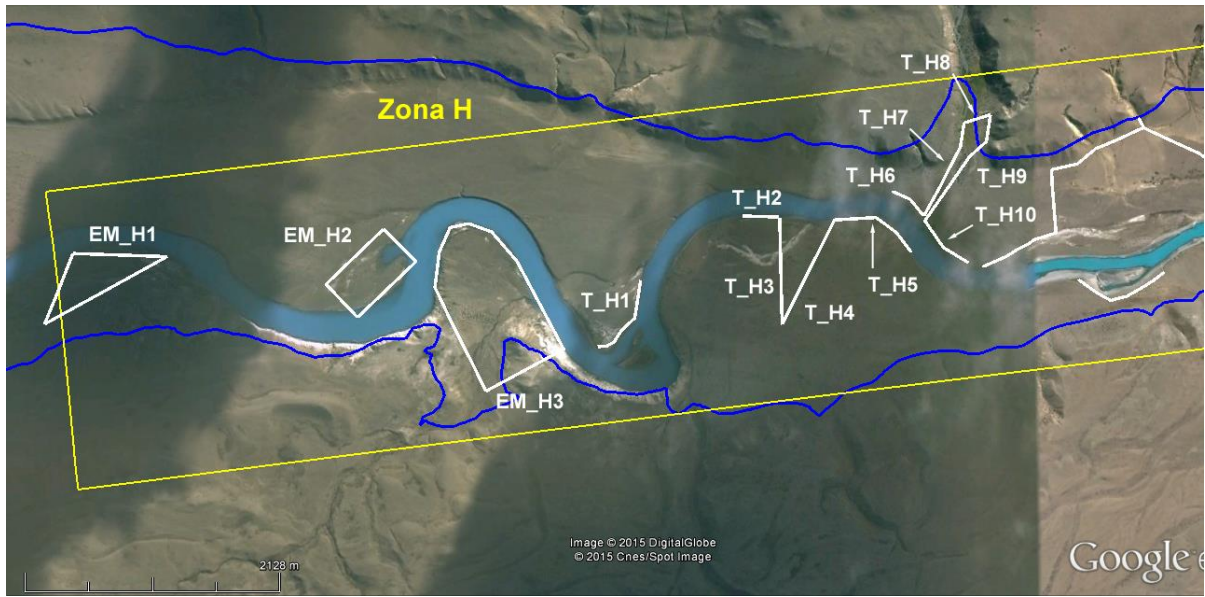


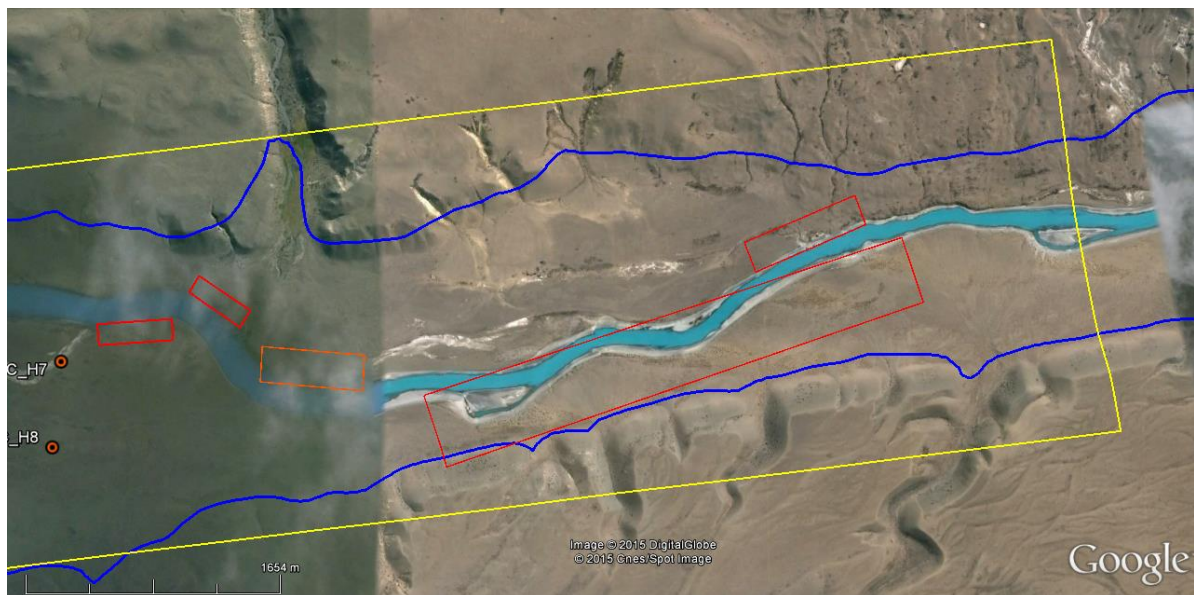
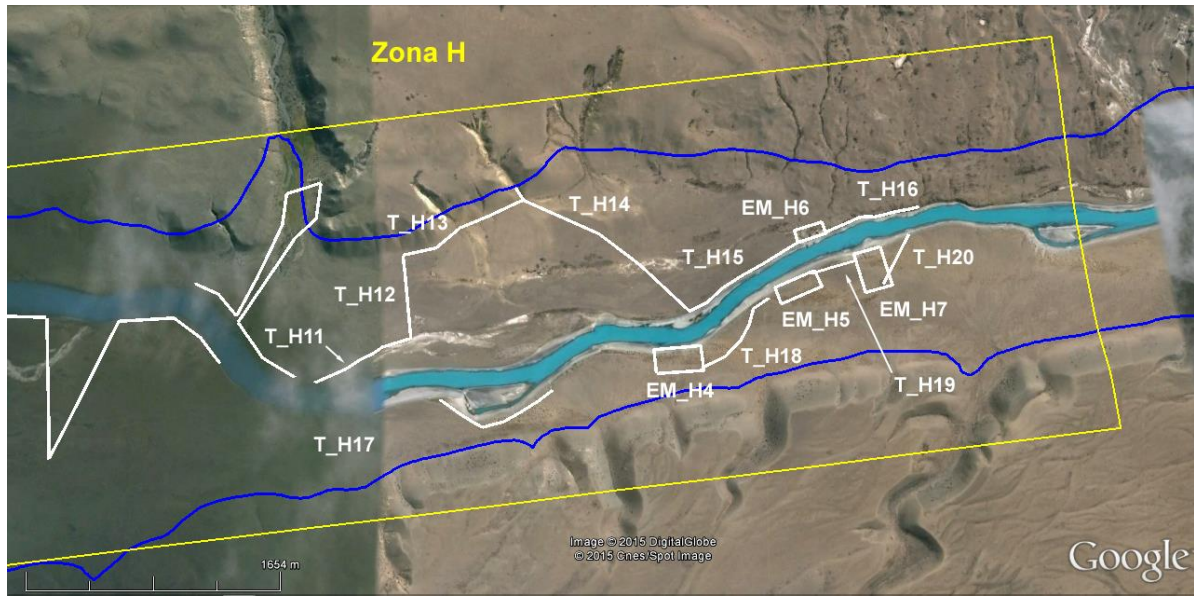


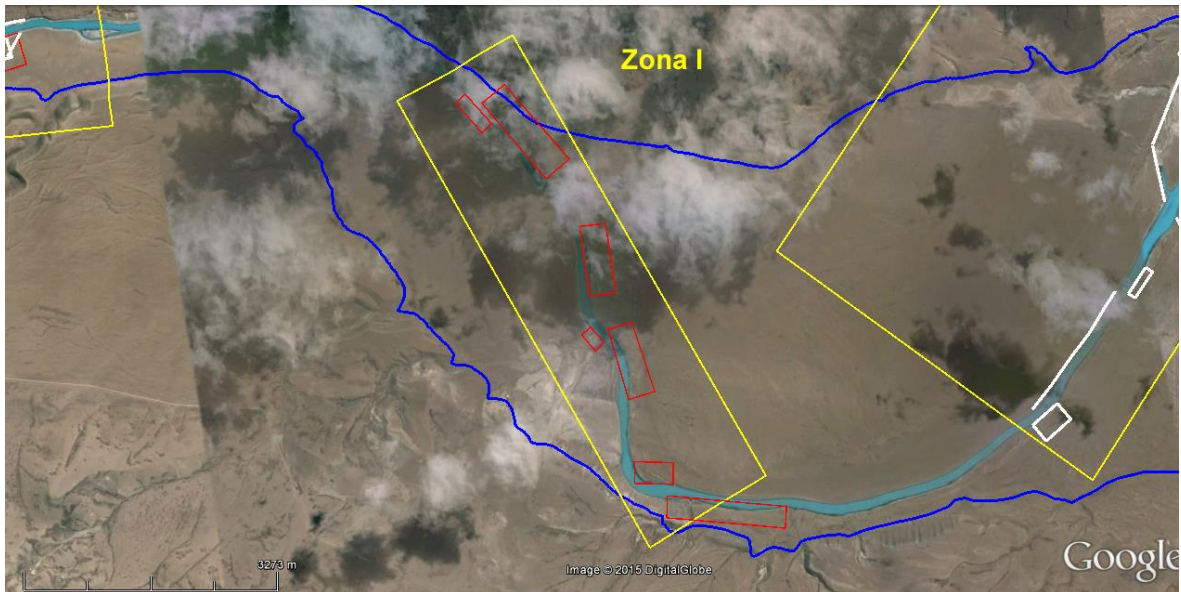
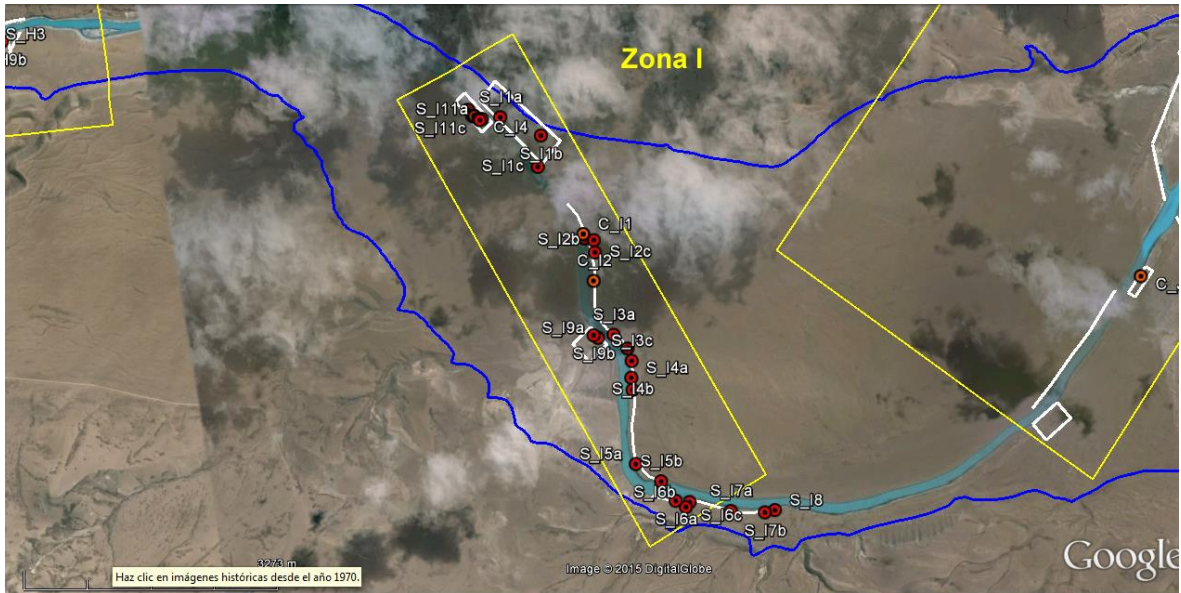
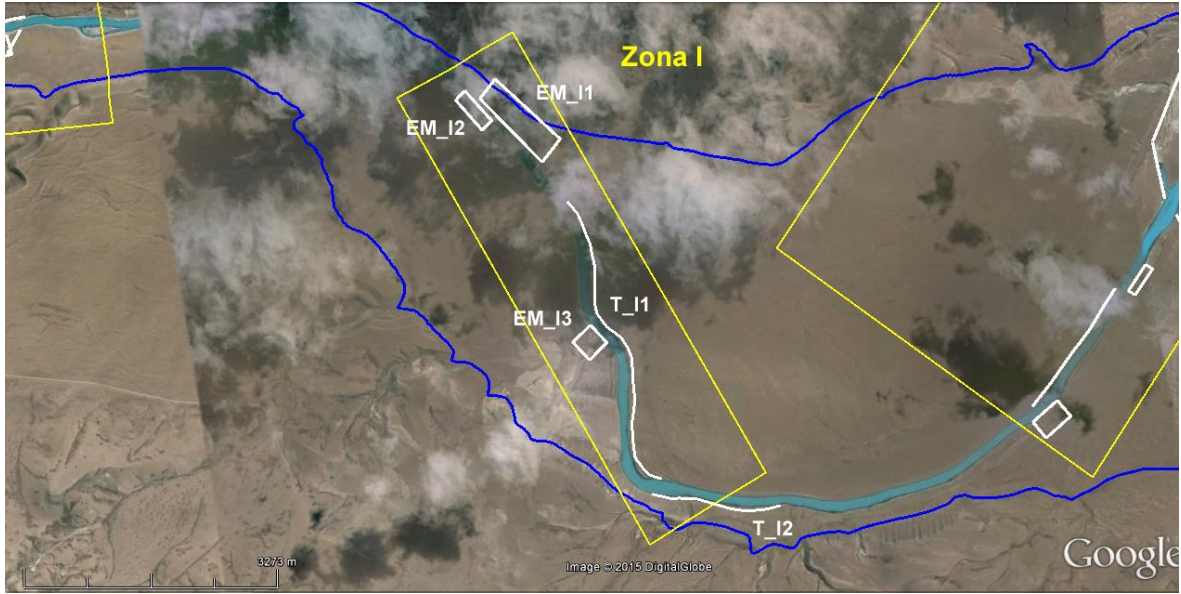


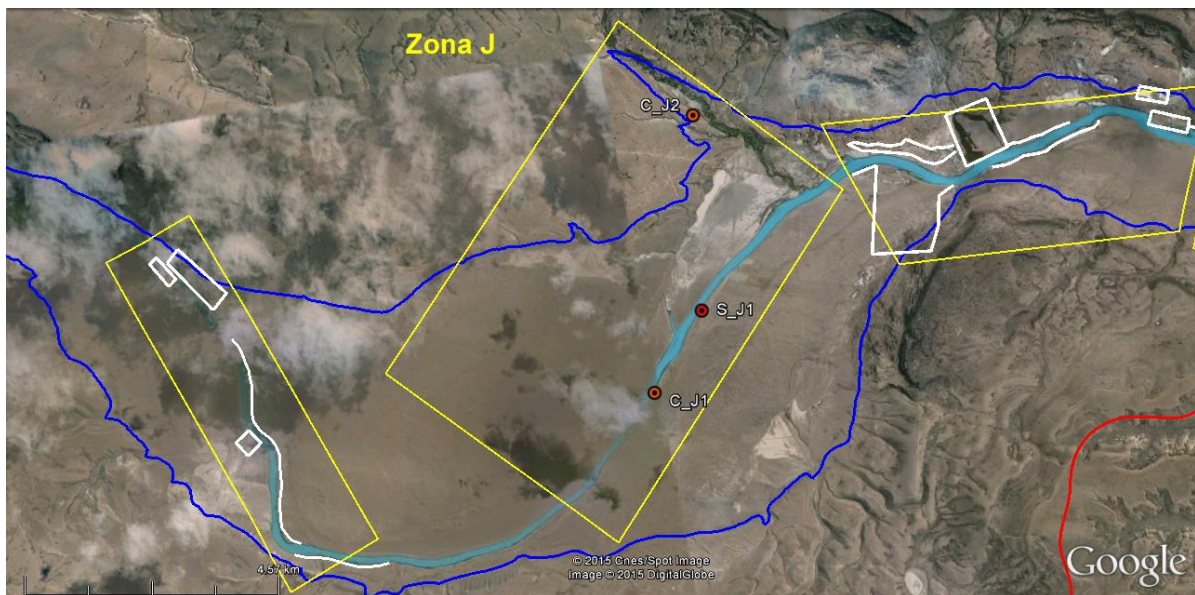
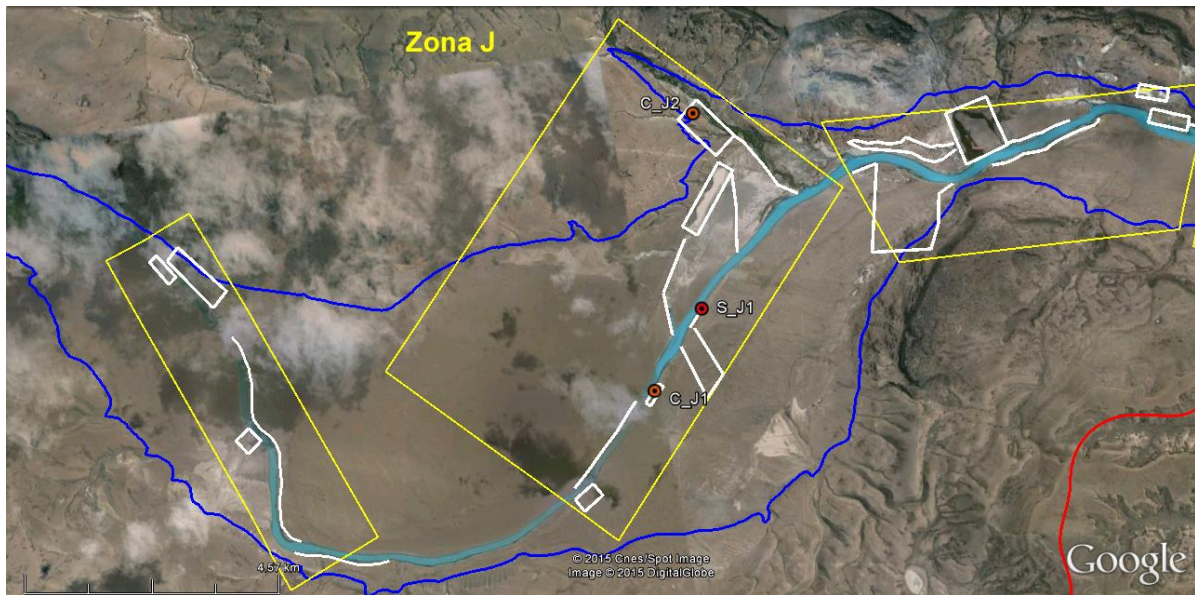
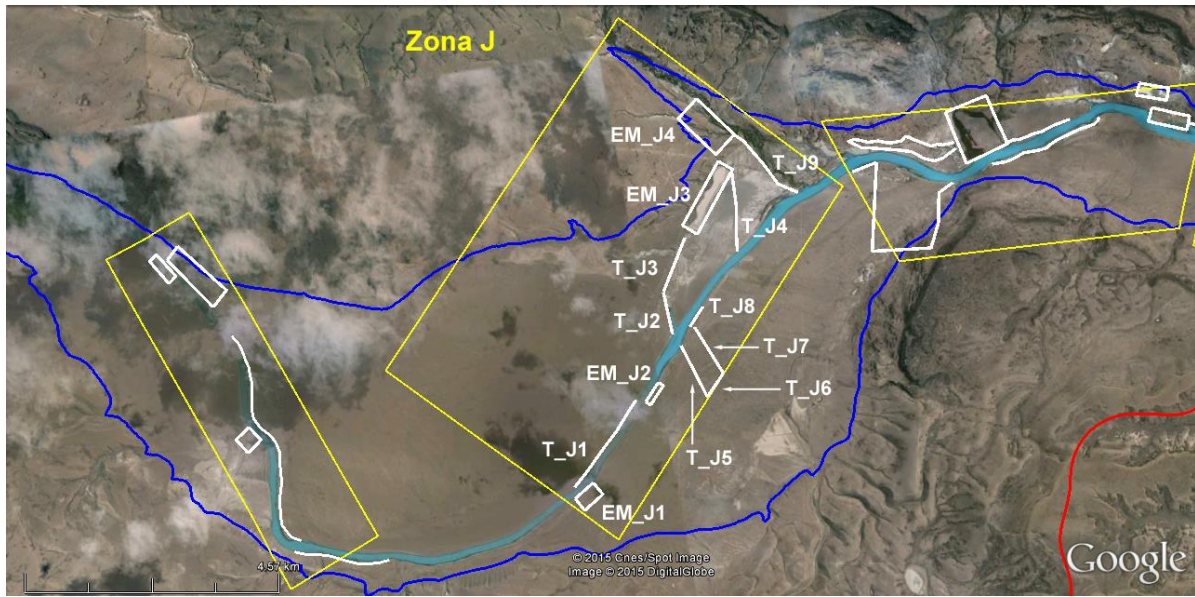


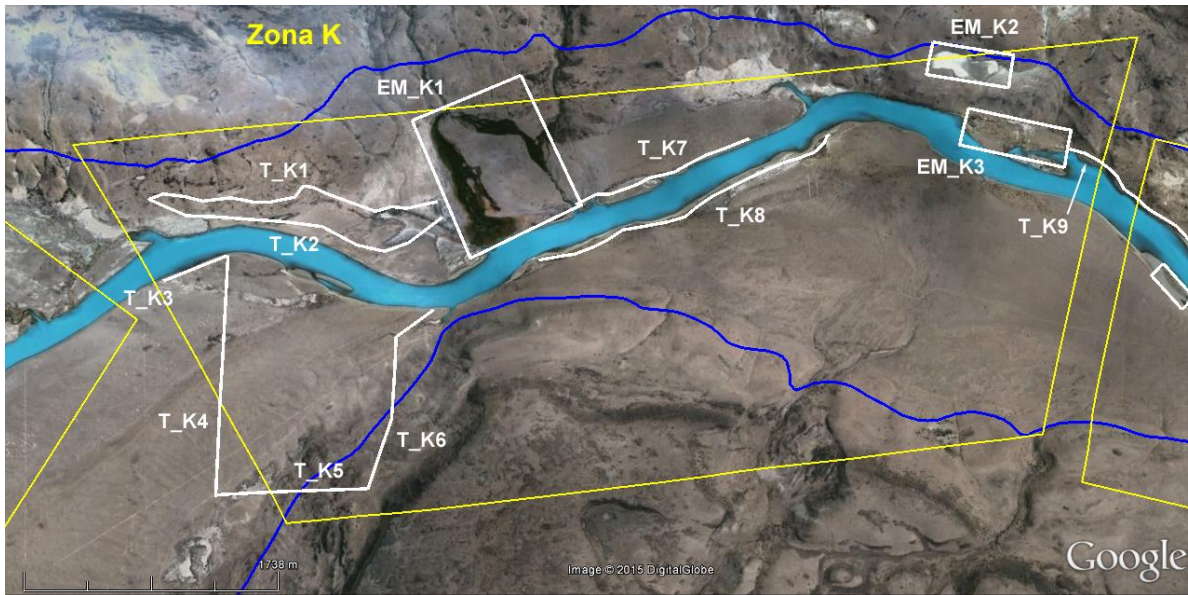


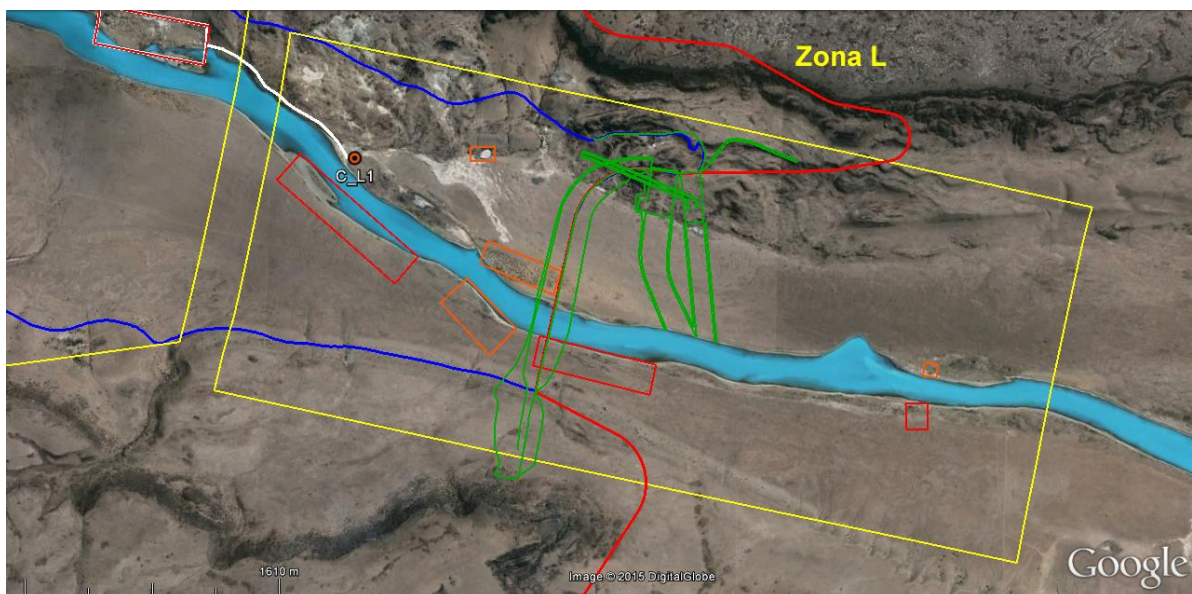
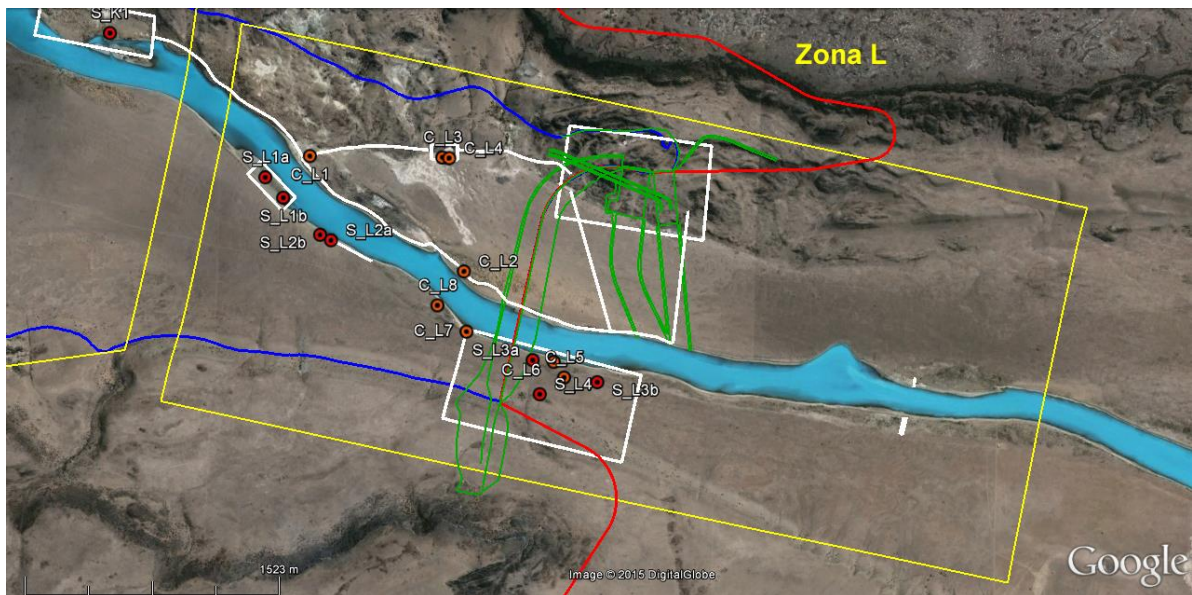
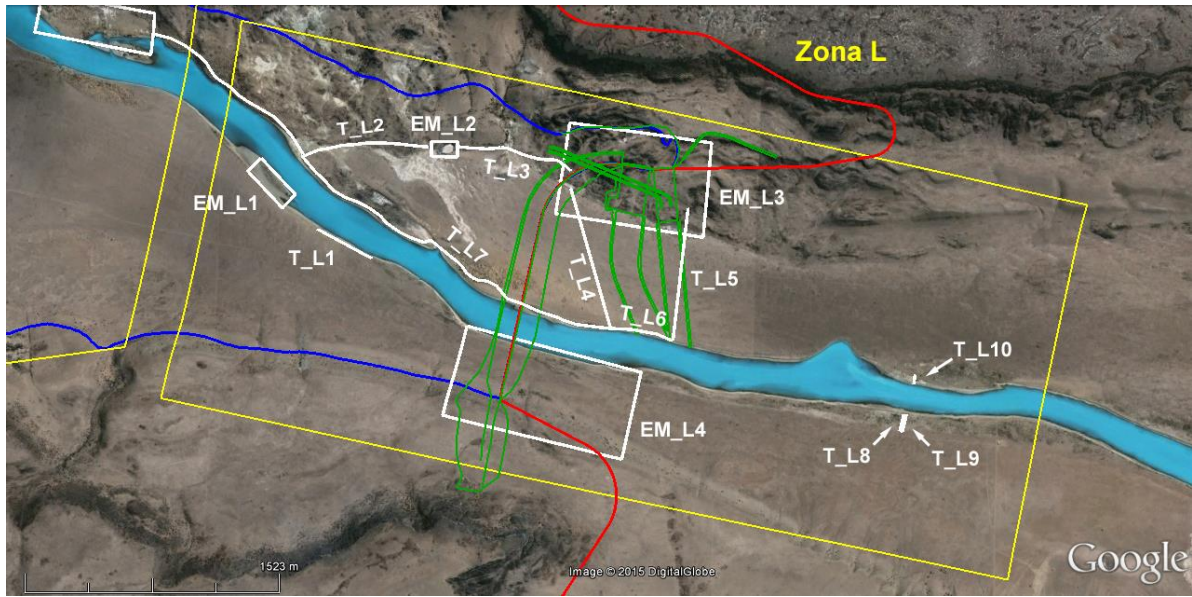












2 PRESA JORGE CEPERNIC

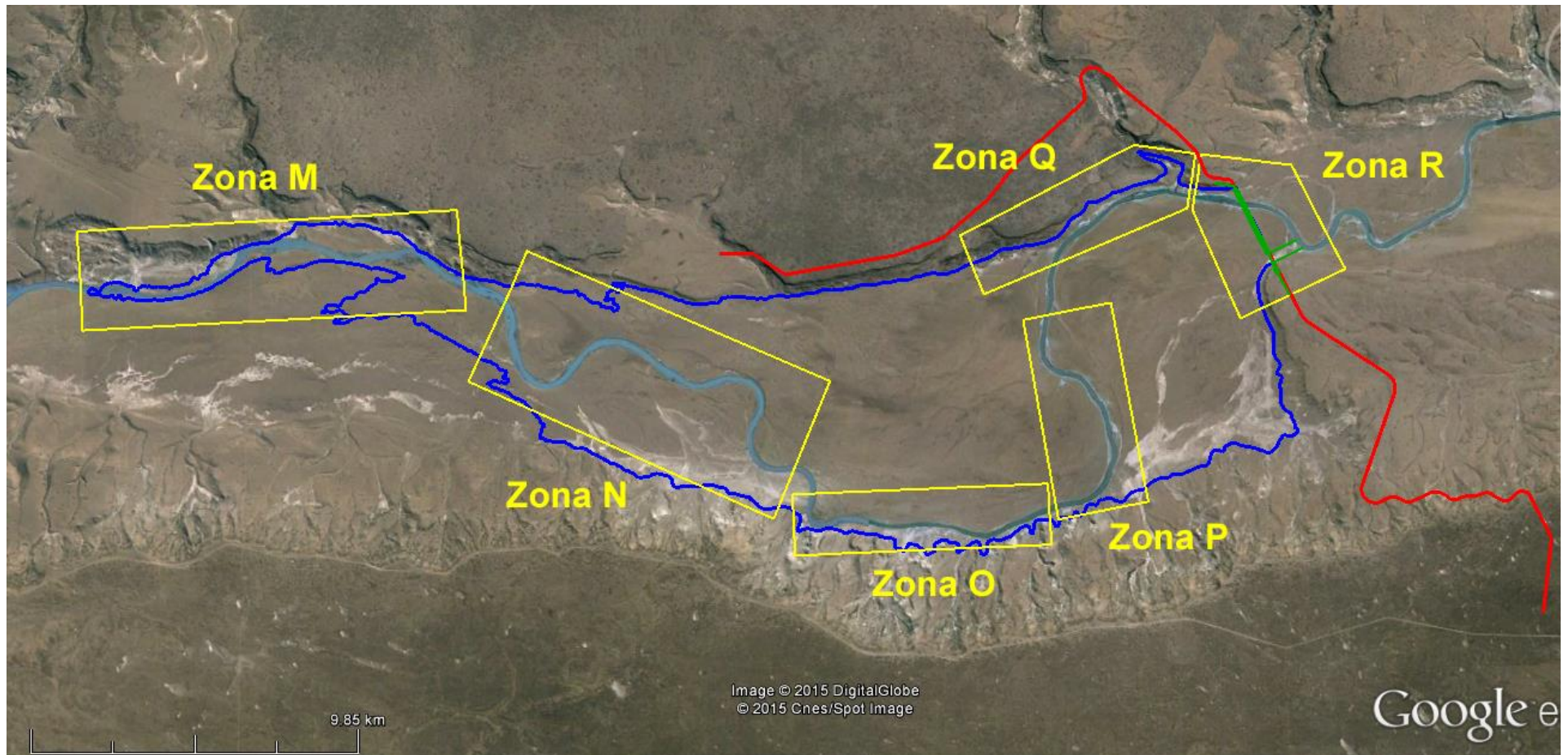


Figura 2. Área de inundación y zonas muestradas para JC. A continuación se detallan los muestreos realizados para cada zona. Posteriormente, se indican los puntos o sectores en que se registraron materiales arqueológicos en cada uno de los muestreos, divididos en sitios y concentraciones. Finalmente, se presentan mapas con los espacios de alta y media sensibilidad en cada una de las zonas. La sensibilidad alta se indica en rojo, mientras que la media está expresada en naranja.

